

pGIS tools for applying an ecosystem approach -
 case study from Strathard using map-me
 ialeUK student workshop, May 2016

Chloe Bellamy, Christine Ratcliffe,
 Andrew Rattey, Darren Moseley (FR)
 Louise Bond & Nicola Melville (SEPA)

Forest Research The Strathard Project

- * Partnership project established in 2015, led by SEPA
- * Applying an **ecosystems approach** to identify natural water and land management solutions in an attempt to reduce flooding and improve ecosystem service delivery
- * Improve joined up thinking and delivery
- * Co-development of plans with the community to ensure these meet local aspirations as well as Scottish Government goals
- * Use this as a demonstration project to develop best practice guidelines

2 © Crown copyright www.forestry.gov.uk/forestryresearch

Forest Research
 © Crown copyright and database rights 2015 Ordnance Survey 100091262

3 © Crown copyright www.forestry.gov.uk/forestryresearch

Forest Research Mapping cultural values

- * Forest Research are working on gathering data on ecosystems (types & conditions), what management is already happening or planned, and what benefits people derive from the landscape
- * With this information we will be developing opportunity maps that identify potential locations for action
- * We have detailed maps that predict the delivery of some services e.g. carbon and timber, but how do we collect important local information & measure cultural ecosystem services?

4 © Crown copyright www.forestry.gov.uk/forestryresearch

Forest Research Mapping cultural values

Calling all residents, businesses, visitors & landowners in Aberfoyle, Kinlochard, Stronachlachar & Inversnaid
 Strathard: a landscape to live, work and play is a collaborative initiative giving you an opportunity to influence how the land, forest and water within Strathard is managed.
 Drop into the community launch event & get involved!
 Community 5th premises, interactive workshops & refreshments!
 Everyone welcome!

Community Launch Event
 Sat 27 Feb 10am - 12pm
 Kinlochard Village Hall

- * Forest Research are working on gathering data on ecosystems (types & conditions), what management is already happening or planned, and what benefits people derive from the landscape
- * With this information we will be developing opportunity maps that identify potential locations for action
- * We have detailed maps that predict the delivery of some services e.g. carbon and timber, but how do we collect important local information & measure cultural ecosystem services?

Community events

5 © Crown copyright www.forestry.gov.uk/forestryresearch

Forest Research Community events

What do you contribute to the landscape?
 How do you support the landscape?
 How does the landscape support you?
 What roots your community to the landscape?

Strathard: a landscape to live, work and play is a collaborative initiative giving you an opportunity to influence how the land, forest and water within Strathard is managed.

Strathard: A landscape to live, work and play
 What can nature do for us?
 The local forestry is an interesting...
 I think about...
 I have...
 I like...
 I have...
 I like...
 I have...

<https://youtu.be/vML9a1Wu9eU>

6 © Crown copyright www.forestry.gov.uk/forestryresearch



* Forest Research are working on gathering data on ecosystems (types & condition), what management is already happening or planned, and what benefits people derive from the landscape
 * With this information we will be developing opportunity maps that identify potential locations for action
 * We have detailed maps that predict the delivery of some services e.g. carbon and timber, but how do we collect important local information & measure cultural ecosystem services?

Community events
 Interviews

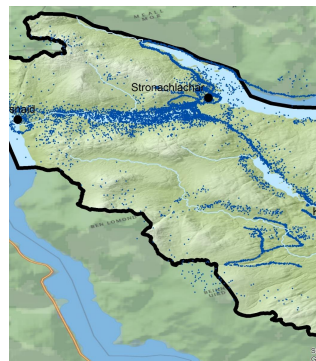
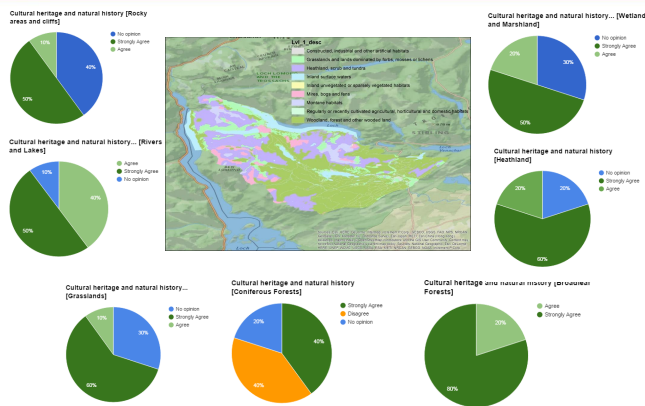
Strathard: a landscape to live, work and play

Nature provides us with many things, from products such as food and timber, to opportunities for outdoor recreation and benefits that are not always obvious, such as removing pollutants from the air and water. These contribute to humanity's security, health and well-being.
 We would like you to tell us what you value about Strathard. The results will be used to help protect and improve the Strathard Landscape.
 There are 2 sections to this survey, the first part contains questions about the benefits you get from the different natural environments in Strathard, and in the second section we would like you to tell us about what you value about Strathard. A final short section includes a few questions about you. This has been included for us to check that the responses are representative of the range of visitors that come to Strathard. This survey should take approximately 20 minutes.
 Privacy statement:
 Data provided is an important issue, no personal data that can be used to identify you will be collected.
 *This survey works best in Firefox and Chrome. A hard copy is available if you would prefer. Please contact: info@communities@forestry.gov.uk for more details.
 *Required



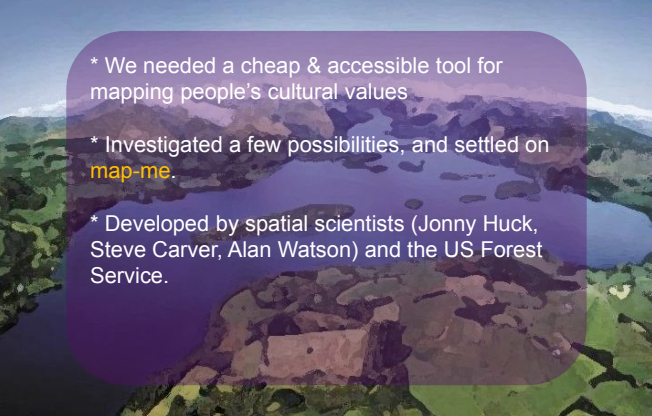
* Forest Research are working on gathering data on ecosystems (types & condition), what management is already happening or planned, and what benefits people derive from the landscape
 * With this information we will be developing opportunity maps that identify potential locations for action
 * We have detailed maps that predict the delivery of some services e.g. carbon and timber, but how do we collect important local information & measure cultural ecosystem services?

Community events
 Interviews
 Online questionnaire

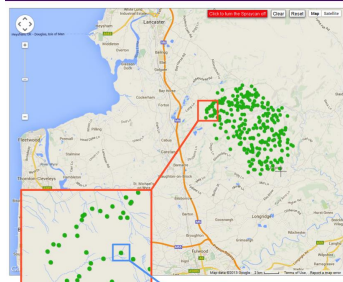


* Forest Research are working on gathering data on ecosystems (types & conditions), what management is already happening or planned, and what benefits people derive from the landscape
 * With this information we will be developing opportunity maps that identify potential locations for action
 * We have detailed maps that predict the delivery of some services e.g. carbon and timber, but how do we collect important local information & measure cultural ecosystem services?

Community events
 Online questionnaire
 Interviews
 pGIS

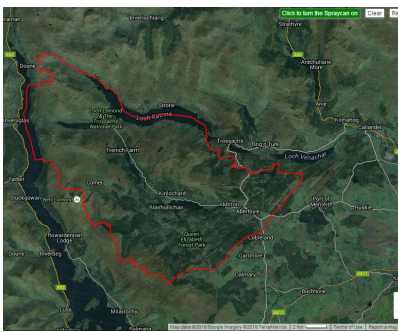


* We needed a cheap & accessible tool for mapping people's cultural values
 * Investigated a few possibilities, and settled on **map-me**.
 * Developed by spatial scientists (Jonny Huck, Steve Carver, Alan Watson) and the US Forest Service.



- * Online pGIS tool
- * Designed to be 'place' based rather than space based
- * A 'spraycan' allows users to map fuzzy areas rather than outline specific locations
- * Collects information about the spray dot locations & the user
- * Has been 'set loose in the wild' to uncover its applicability and limitations

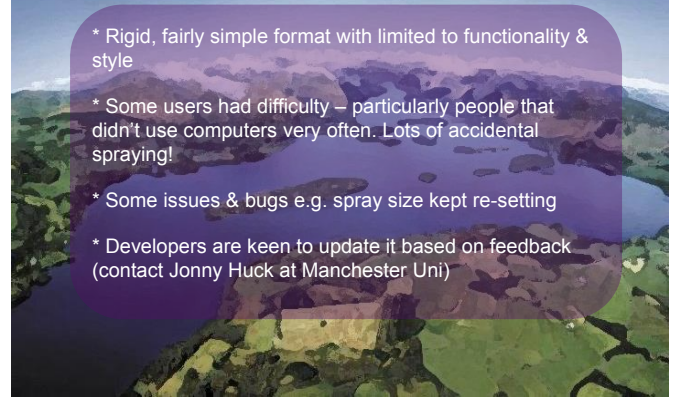




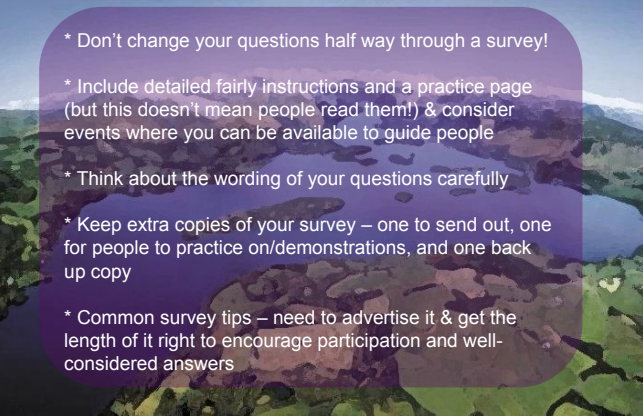
Asked the users to spray on locations...

- * Where they enjoy the sights, sounds or smells (sensory)
- * Where they carry out recreational activities
- * **That contribute to their general well-being**
- * Where they would like to see improvements
- * **That they valued for other reasons**

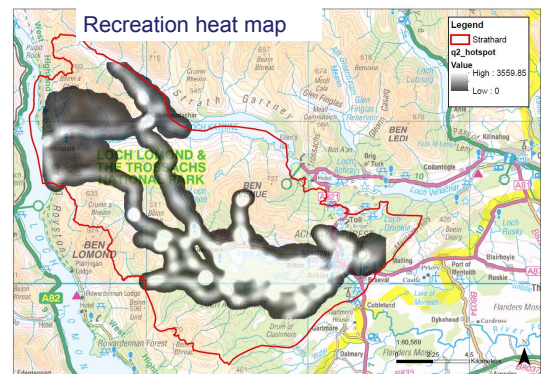
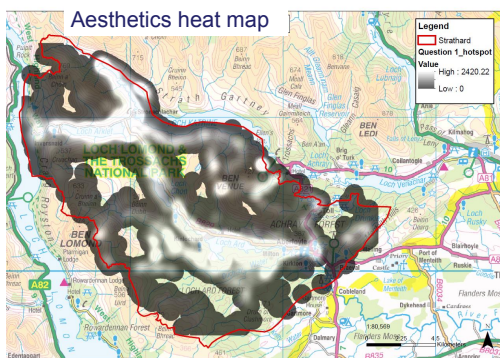
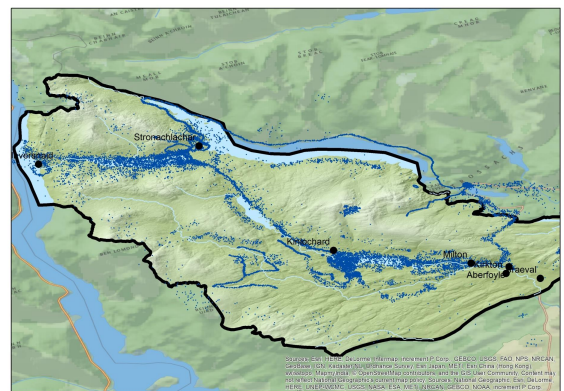
<http://map-me.org/sites/FRSTest>

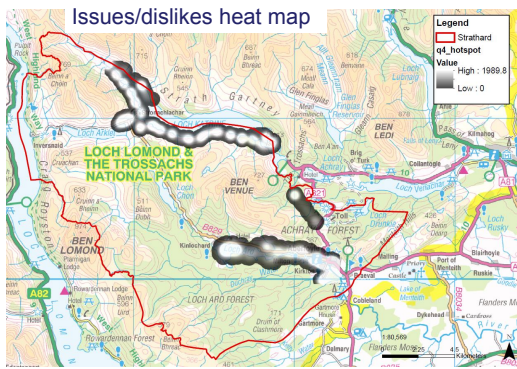


- * Rigid, fairly simple format with limited to functionality & style
- * Some users had difficulty – particularly people that didn't use computers very often. Lots of accidental spraying!
- * Some issues & bugs e.g. spray size kept re-setting
- * Developers are keen to update it based on feedback (contact Jonny Huck at Manchester Uni)



- * Don't change your questions half way through a survey!
- * Include detailed fairly instructions and a practice page (but this doesn't mean people read them!) & consider events where you can be available to guide people
- * Think about the wording of your questions carefully
- * Keep extra copies of your survey – one to send out, one for people to practice on/demonstrations, and one back up copy
- * Common survey tips – need to advertise it & get the length of it right to encourage participation and well-considered answers





S	C	D	T	Issue	Start	End
228	6526	3275	1	View of Strathard	2018-02-27 07:07	
229	6526	3275	2	View from the east end of Loch Ard captures a great view of Ben Lomond. From this point onwards you feel you have stepped into a whole new landscape.	2018-02-27 07:07	
229	6526	3275	3	The views from these two locations are spectacular.	2018-02-27 07:07	
229	6526	3275	4	Unspoilt village - residential areas.	2018-02-27 07:07	
229	6526	3275	5	View of Loch Ard from the water.	2018-02-27 07:07	
229	6526	3275	6	Same as previous	2018-02-27 07:07	
229	6526	3275	7	Lochs and hills.	2018-02-27 07:07	
229	6526	3275	8	View of Loch Ard from the water.	2018-02-27 07:07	
229	6526	3275	9	Lochs and hills.	2018-02-27 07:07	
229	6526	3275	10	Lochs and hills.	2018-02-27 07:07	
229	6526	3275	11	Lochs and hills.	2018-02-27 07:07	
229	6526	3275	12	Lochs and hills.	2018-02-27 07:07	
229	6526	3275	13	Lochs and hills.	2018-02-27 07:07	
229	6526	3275	14	Lochs and hills.	2018-02-27 07:07	
229	6526	3275	15	Lochs and hills.	2018-02-27 07:07	
229	6526	3275	16	Lochs and hills.	2018-02-27 07:07	
229	6526	3275	17	Lochs and hills.	2018-02-27 07:07	
229	6526	3275	18	Lochs and hills.	2018-02-27 07:07	
229	6526	3275	19	Lochs and hills.	2018-02-27 07:07	
229	6526	3275	20	Lochs and hills.	2018-02-27 07:07	

- * Lots of options for further analysis (e.g. using data as inputs to predictive models)
- * Natural Language Processing (NLP) tool to identify positive, negative or subject specific comments associated with the spray
- * Developing a paper version of the survey for visitors (low take up online from visitors)
- * Using the outputs to encourage further participation with stakeholders
- * Integrating the outputs in the wider ecosystem service assessment to identify opportunity areas
- * Applying it to other projects e.g. perceived biodiversity across Edinburgh for GREEN SURGE

- * It's free!
- * It's easy and quick to set up & maintain (user guide provided)
- * It provides an accessible PGIS format – users just need a web browser
- * Fairly detailed outputs are provided

Do you think you might be able to make use of map-me for your research? It's very easy to set up – have a go!

1. Go to <http://map-me.org/>
2. Create a login
3. Choose 'create a new site'
4. Start filling in information to create a site (can be for an existing or made up project)
5. Play around with the settings
6. Answer it as a user and examine the outputs